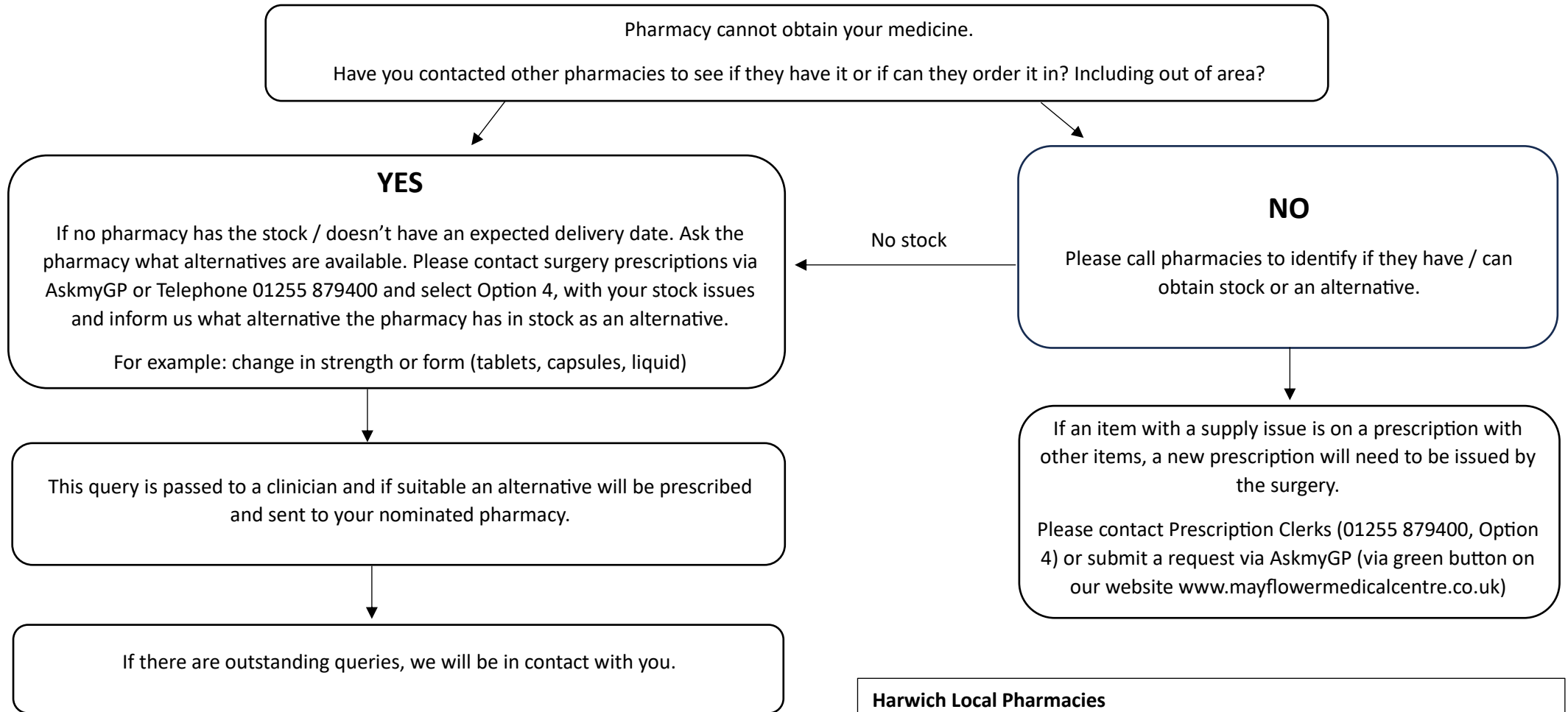


# SUPPLY ISSUES PATIENT FLOWCHART



**More Information:**  
Find a Pharmacy: [www.nhs.uk/service-search/pharmacy/find-a-pharmacy](http://www.nhs.uk/service-search/pharmacy/find-a-pharmacy)  
How Pharmacies Can Help: [www.nhs.uk/nhs-services/pharmacies/how-pharmacies-can-help](http://www.nhs.uk/nhs-services/pharmacies/how-pharmacies-can-help)  
Medicines A-Z: [www.nhs.uk/medicines](http://www.nhs.uk/medicines)  
How to Order a Repeat Prescription: [www.nhs.uk/nhs-services/prescriptions/how-to-order-a-repeat-prescription](http://www.nhs.uk/nhs-services/prescriptions/how-to-order-a-repeat-prescription)

**Harwich Local Pharmacies**

Borno Pharmacy, 419 Main Rd, Harwich CO12 4EX – 01255 503755  
Monday to Friday: 8:30am – 6:30pm. Saturday and Sunday: Closed.

Day Lewis Pharmacy, 151 High St, Harwich CO12 3AX – 01255 552017  
Monday to Friday: 9am – 6pm. Saturday and Sunday: Closed.

Oakley Pharmacy, 10 Oakley Rd, Harwich CO12 4QZ – 01255 502586  
Monday to Friday: 9am – 6pm. Saturday: 9am – 1pm. Sunday: Closed.

Boots Harwich, 224-226 High St, Harwich CO12 3AJ – 01255 503508  
Monday to Saturday: 8:30am – 5pm. Sunday: Closed.